

YEAR

2015

LINK STUBBS RD (from WAN CHAI GAP to WONG NAI CHUNG
GAP RD)

COVERAGE (B) STATION

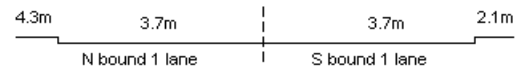
2203

ROAD NETWORK

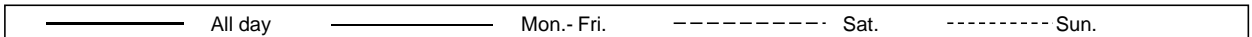
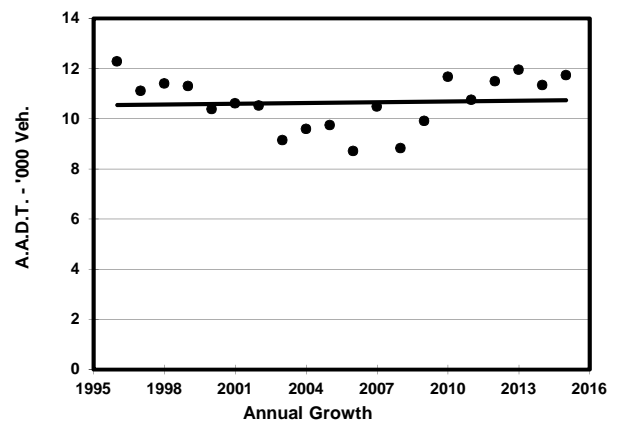
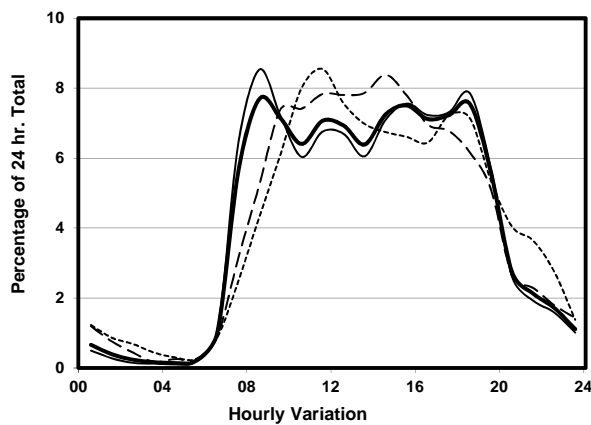
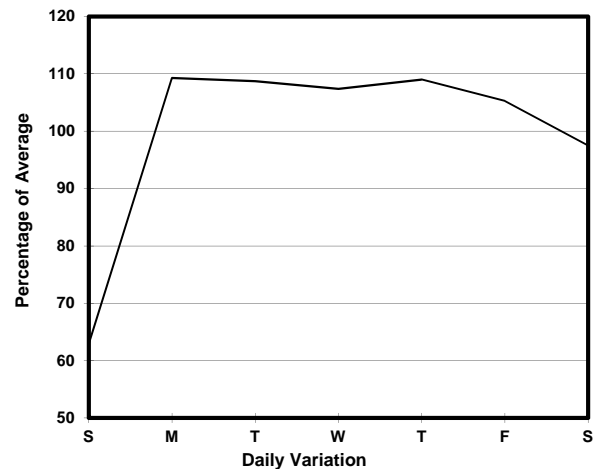
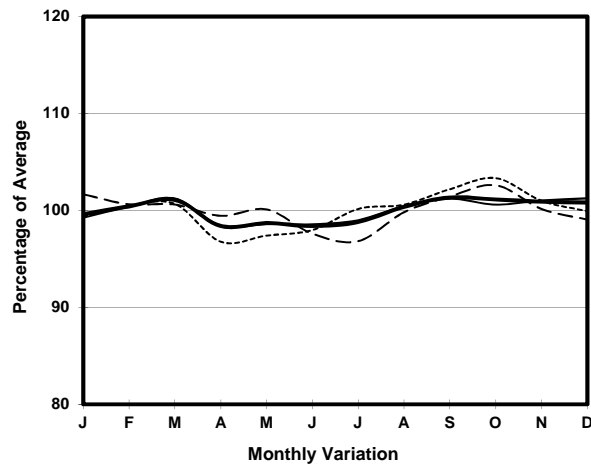
MAJOR

ROAD TYPE

DISTRICT DISTRIBUTOR



1. TRAFFIC FLOW VARIATION AND GROWTH



2. TRAFFIC CHARACTERISTICS (BY DIRECTION)

Parameter	All - Day	Mon. - Fri.	Sat.	Sun.
SOUTH BOUND				
A.A.D.T.	6050	6640	6010	3960
R 12 / 24 - %	83.1	83.7	82.8	78.5
R 16 / 24 - %	96.2	96.7	94.8	94.2
AM Peak Hour	0800-0900	0800-0900	0900-1000	0900-1000
One-way flow at AM peak hour	420	520	460	240
T - % (AM)	-	19.5	-	-
PM Peak Hour	1800-1900	1800-1900	1600-1700	1800-1900
One-way flow at PM peak hour	480	560	430	280
T - % (PM)	-	10	-	-
Prop.of commercial vehicles - 16 hr.	-	11	-	-
NORTH BOUND				
A.A.D.T.	5680	6270	5670	3550
R 12 / 24 - %	84.8	86	82.7	77.8
R 16 / 24 - %	95.9	96.5	94.4	93.8
AM Peak Hour	0800-0900	0800-0900	0900-1000	0900-1000
One-way flow at AM peak hour	480	590	410	220
T - % (AM)	-	7.4	-	-
PM Peak Hour	1700-1800	1700-1800	1600-1700	1700-1800
One-way flow at PM peak hour	420	470	380	270
T - % (PM)	-	11.6	-	-
Prop.of commercial vehicles - 16 hr.	-	10.1	-	-

3. OTHER INFORMATION AND COMMENT

4. Vehicle classification and occupancy - Monday to Friday

Time		Class of vehicle									
		Motor	Private	Taxi	Private	PLB	Goods veh.		Non	Fr. Bus	
		Cycle	Car		LB		Light	M & H	Fr. Bus	SD	DD
0700-0800	Pro	2.1	41.0	44.5	0.7	1.4	2.8	0.7	5.6	0.0	1.2
	Ocp	1.0	1.9	2.3	12.0	7.0	1.8	1.0	9.0	0.0	54.6
0800-0900 Peak hour	Pro	0.0	63.2	18.9	0.0	1.6	4.1	3.7	7.4	0.0	1.0
	Ocp	0.0	1.8	2.5	0.0	3.8	2.0	1.3	13.4	0.0	40.3
0900-1000	Pro	0.0	66.5	15.7	0.4	0.8	12.9	2.4	0.4	0.0	0.8
	Ocp	0.0	1.6	1.8	5.0	1.0	2.0	1.3	7.0	0.0	30.3
1000-1100	Pro	1.8	55.4	15.1	0.0	0.9	16.0	5.0	4.6	0.0	1.0
	Ocp	1.0	1.7	1.8	0.0	5.0	1.8	1.5	12.5	0.0	26.0
1100-1200	Pro	2.0	60.0	13.4	0.5	0.0	12.4	3.5	6.9	0.0	1.4
	Ocp	1.0	1.4	2.0	12.0	0.0	1.7	1.4	20.2	0.0	21.0
1200-1300	Pro	1.1	53.6	21.7	2.2	0.0	10.8	3.2	6.0	0.0	1.5
	Ocp	1.5	1.5	1.8	5.0	0.0	2.0	1.8	21.5	0.0	21.5
1300-1400	Pro	1.1	49.2	21.7	0.0	0.0	16.4	4.8	5.3	0.0	1.6
	Ocp	1.0	1.7	1.6	0.0	0.0	1.5	1.2	13.2	0.0	25.8
1400-1500	Pro	0.0	50.8	21.2	0.4	1.3	11.5	4.4	9.3	0.0	1.1
	Ocp	0.0	1.6	1.8	2.0	2.7	1.9	1.2	8.5	0.0	38.9
1500-1600	Pro	0.9	60.0	17.4	0.9	0.9	10.5	2.8	5.5	0.0	1.0
	Ocp	1.0	1.6	2.4	11.5	11.5	1.6	1.7	13.0	0.0	41.6
1600-1700	Pro	0.5	50.5	21.1	1.4	1.8	12.4	2.8	8.3	0.0	1.3
	Ocp	1.0	1.6	2.2	12.0	15.3	1.7	1.5	11.7	0.0	46.5
1700-1800	Pro	2.5	56.4	19.1	1.5	0.0	6.4	1.5	11.8	0.0	1.0
	Ocp	1.0	1.8	2.2	1.3	0.0	1.8	1.7	15.8	0.0	59.4
1800-1900	Pro	1.9	60.0	24.2	0.4	0.7	3.0	0.4	8.9	0.0	0.6
	Ocp	1.2	1.6	2.1	2.0	16.0	2.0	1.0	16.0	0.0	62.7
1900-2000	Pro	0.4	70.2	20.1	0.0	0.9	2.2	0.0	5.2	0.0	1.0
	Ocp	1.0	1.5	2.1	0.0	4.0	1.2	0.0	14.3	0.0	47.0
2000-2100	Pro	0.0	59.1	14.8	0.0	2.3	5.7	1.1	13.6	0.3	3.1
	Ocp	0.0	1.6	1.6	0.0	4.0	1.4	1.0	17.8	1.0	42.3
2100-2200	Pro	0.0	46.8	33.9	0.0	0.0	3.2	0.0	12.9	0.0	3.2
	Ocp	0.0	1.3	2.4	0.0	0.0	1.5	0.0	11.4	0.0	32.5
2200-2300	Pro	4.1	61.2	28.6	0.0	0.0	0.0	0.0	2.0	0.0	4.1
	Ocp	1.0	1.8	1.6	0.0	0.0	0.0	0.0	22.0	0.0	24.4
16 hours	Pro	1.0	57.3	20.7	0.6	0.8	8.9	2.5	6.8	0.1	1.2
	Ocp	1.1	1.6	2.1	6.8	7.2	1.8	1.4	14.2	1.0	37.2

Legend

Pro. Proportion of vehicles in % (Sum may not add up to 100% due to figure rounding)*

Ocp. Average occupancy of vehicles including both driver and passengers*

M&H Medium and Heavy

* All traffic data are collected from combined bounds except for one way traffic